

# State of California



## End-User Workstation Configuration Guide – For July 2018 Release

**Version 6.0**

**Draft**

**December 2017**



Date	Revision	Last Updated By	Change
5/28/15	4.2	Peter Han	<ul style="list-style-type: none"> <li>- Revised URLs for SmartView</li> <li>- Changed "Smart View" to "SmartView"</li> <li>- Updated the Wave 1 reference to Wave 1 and Wave 2 in 3.2.2. Applications Covered</li> </ul>
6/4/15	4.3	Derek Salzman	<ul style="list-style-type: none"> <li>- Clarified section on accessibility software</li> <li>- Updated Hyperion Internet Explorer configuration by removing instruction to disable HTTPS requirement for trusted sites</li> </ul>
7/20/15	4.4	Ed Remaley	<ul style="list-style-type: none"> <li>- Clarified internet browser certification for Internet Explorer 11</li> </ul>
8/19/15	4.5	Ed Remaley	<ul style="list-style-type: none"> <li>- Additional documentation of Enterprise Mode. Later removed.</li> </ul>
12/9/15	4.6	Bryan Sohayda	<ul style="list-style-type: none"> <li>- DRAFT updates for Release 2016</li> <li>- Removed detail for GRC and Primavera, will generate separate Appendix documents for SCO/DGS respectively. Reduces confusion for incoming Depts. if they need to use GRC/Primavera respectively.</li> <li>- Removed application versions as it doesn't impact the requirement</li> <li>- Revised list of Certified Browsers per Oracle</li> <li>- Revised Office versions to remove version 2007</li> <li>- Table 5 – Remove Internet Explorer 8 reference</li> <li>- 4.1.2 Hyperion Planning: removed reference to Enterprise Mode and Internet Explorer 8. Modified Firefox details</li> </ul>
1/13/16	4.6.1	Bryan Sohayda	<ul style="list-style-type: none"> <li>- Updates for 2016 Release</li> </ul>
1/14/16	4.6.1	Eunice Malley	<ul style="list-style-type: none"> <li>- Added heading for Section 6, Departmental Configuration, and Section 6.1 regarding FTA whitelists</li> </ul>
1/15/16	4.7	Eunice Malley	<ul style="list-style-type: none"> <li>- Tech edit of changes made since last publication</li> </ul>
2/2/16 2/11/16 2/29/16 3/9/16	5.0	Valerie Stanfield Eunice Malley	<ul style="list-style-type: none"> <li>- Clean up edits. Modified whitelist wording.</li> </ul>
7/6/16	5.1	Rabah Khemis Eunice Malley	<ul style="list-style-type: none"> <li>- SmartView and Hyperion updates</li> </ul>
7/22/16	5.2	Eunice Malley	<ul style="list-style-type: none"> <li>- Browser and settings updates.</li> </ul>
8/1/16	5.3	Peter Lee Eunice Malley	<ul style="list-style-type: none"> <li>- Browser Configuration changes - Internet Explorer (All versions)</li> <li>- Changes to Oracle SmartView Installation for Hyperion</li> </ul>

11/9/17	6.0	Mitchelle Decina	<ul style="list-style-type: none"> <li>- Updated the Operating Systems section to specify Windows 10 as an Oracle-certified OS.</li> <li>- Added Microsoft 2016 in the Productivity Software section.</li> <li>- Updated the screenshots for Hyperion, as the previous screenshots don't have the latest FI\$Cal logo.</li> <li>- Added screenshots on SmartView installation section.</li> <li>- Added instructions on how to enable SmartView add-ins.</li> <li>- Added instructions on how to set IE browser view setting to 100% to avoid browsing issues when using IE 11 for Hyperion.</li> <li>- Removed the instructions on how to enable BI Publisher Accessibility Mode in Workspace. This is no longer applicable because OBIEE 12c is currently not integrated with EPM Workspace 11.1.2.4.</li> </ul>
---------	-----	------------------	--

## Table of Contents

<b>1</b>	<b>Purpose</b> .....	<b>4</b>
<b>2</b>	<b>Network Connectivity</b> .....	<b>4</b>
<b>3</b>	<b>Hardware and Software Requirements</b> .....	<b>4</b>
3.1	Operating Systems .....	4
3.2	Browser Compatibility .....	4
3.2.1	What is “Certification” for Browser Compatibility? .....	4
3.2.2	Applications Covered .....	4
3.2.3	Certified Browsers .....	5
3.3	Productivity Software .....	5
3.4	Accessibility Software .....	6
3.5	Hardware .....	6
<b>4</b>	<b>Workstations Configuration Procedures</b> .....	<b>7</b>
4.1	Browser Configuration .....	7
4.1.1	Configuration for PeopleSoft Financials Users .....	7
4.1.2	Configuration for Hyperion Planning Users .....	8
4.2	Spreadsheet Uploads .....	12
4.3	Enabling Macros in Excel .....	13
4.4	Client Software Installation .....	13
4.4.1	SmartView Installation for Hyperion .....	13
<b>5</b>	<b>Accessibility</b> .....	<b>14</b>
5.1	PeopleSoft Accessibility Mode .....	14
5.2	Hyperion Accessibility Mode .....	16
<b>6</b>	<b>Departmental Configuration</b> .....	<b>21</b>
6.1	Whitelists for FI\$Cal Training Academy .....	21
	<b>Appendix A. Acronyms and Glossary</b> .....	<b>22</b>

## List of Tables

Table 1:	FI\$Cal Application URLs .....	4
Table 2:	Certified Browsers .....	5
Table 3:	Productivity Software .....	6
Table 4:	Recommended Hardware .....	6
Table 5:	Browser Configuration for PeopleSoft Users .....	7
Table 6:	Browser Configuration for Hyperion Users .....	8
Table 7:	Macro Security Settings in Excel .....	13
Table 8:	Enabling the Accessibility Mode in PeopleSoft .....	14
Table 9:	Enabling the Accessibility Mode in Hyperion .....	16

## 1 Purpose

This document provides workstation specifications and configurations required for departmental end-user access to the current production FI\$Cal System (FI\$Cal or the System). These requirements are categorized as follows: network connectivity, operating systems, browser compatibility, browser configuration, client software installation, productivity software, accessibility software, and hardware.

A glossary and list of acronyms contained in this document is included in [Appendix A](#) for reference.

## 2 Network Connectivity

Table 1 provides the list of FI\$Cal application URLs that must be accessible to the user's workstation. These applications use the HTTPS protocol on standard port 443 and are Internet-enabled.

Table 1: FI\$Cal Application URLs

Application	URL
Portal	<a href="https://portal.fiscal.ca.gov/psppd1/?cmd=start">https://portal.fiscal.ca.gov/psppd1/?cmd=start</a>
PeopleSoft Financials	<a href="https://financials.fiscal.ca.gov/psfpd1/?cmd=start">https://financials.fiscal.ca.gov/psfpd1/?cmd=start</a>
Hyperion Planning	<a href="https://epm.fiscal.ca.gov/workspace/index.jsp">https://epm.fiscal.ca.gov/workspace/index.jsp</a>

## 3 Hardware and Software Requirements

### Operating Systems

FI\$Cal supports Windows 10 operating systems for end-user workstations. Oracle certified Windows 10 for use with FI\$Cal applications.

FI\$Cal provides full support on Windows 10 as of May 24, 2017.

### Browser Compatibility

#### ***What is "Certification" for Browser Compatibility?***

Certification is a combination of Oracle software, browsers, or sometimes other third-party products, and operating systems that Oracle has tested and should work together.

#### ***Applications Covered***

This document contains the current browser certification for the FI\$Cal System.

- PeopleSoft Financials
- PeopleSoft Portal
- Hyperion Planning
- Identity and Access Management (password changes)
- University of FI\$Cal (UF)

**Certified Browsers**

Certified browsers are for workstation (personal computer) and laptop only. FI\$Cal was not designed to support mobile devices such as iPhone, Android, iPad, tablet, etc.

Table 2 contains the list of Oracle-certified browsers for the FI\$Cal Production System and indicates which browsers support which products associated with FI\$Cal. Newer or older browser versions might perform acceptably for most System functions, but are a “use-at-your-own-risk” proposition. This is because Oracle will not support any related issues and the FI\$Cal Service Center does not have control over this aspect of the Commercial-Off-The-Shelf software.

**Note:** Internet Explorer (IE) is the recommended browser.

Table 2: Certified Browsers

Product	Internet Explorer					Firefox					Chrome
	EDGE 20.10240	IE 11	IE10	IE9	IE8	45+*	31**	30**	24**	17**	35
PeopleSoft	X	X	X	X				X	X		X
Hyperion Planning (Version 11.1.2.4)		X	X	X		X	X				
UF		X	X	X	X	X	X	X	X	X	X
Identity Access Management (IAM)		X	X	X	X		X		X	X	

\* For the best user experience, it is recommended that you use Firefox 47 with Microsoft Windows 7.

\*\* Firefox 31.0, 30.0 and 24.7.0 Extended Support Release (ESR)

### Productivity Software

The System uses common applications to support reporting, attachment, and notification functionality:

- Reporting – Report formats use one or more common desktop productivity applications including Microsoft Word, Microsoft Excel, and Adobe Portable Document Format (PDF).
- Attachments – Where applicable, attachment functionality allow users to upload and download reference documents in common formats such as Word, Excel, and PDF.
- Notifications – System-generated workflow notifications will be sent by email to appropriate users based on their assigned FI\$Cal end-user role(s).

Table 3: Productivity Software

Application	Use
<b>Microsoft Word</b> (2010, 2013, 2016)	Viewing reports or attachments formatted in Microsoft Word.
<b>Microsoft Excel</b> (2010, 2013, 2016)	Viewing reports or attachments formatted in Microsoft Excel.
<b>Adobe Reader</b> (9.5 or higher)	Viewing reports or attachments formatted in Adobe PDF.
<b>Notepad</b> (or comparable text editor)	Viewing reports or attachments formatted in plain text (e.g. comma-delimited, flat files).
<b>Email Client</b> (State of California account required - does not need to be provided by OTech)	Communicating. For example, used in workflow processing.

### Accessibility Software

Oracle does not certify its products to run with specific assistive technologies or specific versions of assistive software. Oracle uses development standards to produce applications that will interoperate with assistive technologies. The Project follows these standards for custom-developed system components. The Project uses market-leading assistive technologies to perform accessibility testing.

### Hardware

Minimum hardware requirements vary by the selection of compatible operating system, browser, and applications as specified by the products' vendors. The Project recommends the hardware specifications shown in Table 4 for end-user workstations.



Table 4: Recommended Hardware

Feature	Description
<b>Random Access Memory (RAM)</b>	4 GB RAM minimum
<b>Central Processing Unit (CPU)</b>	1.7+ GHz CPU minimum, multicore CPU recommended
<b>Monitor</b>	Display of 1024x768 resolution or higher and High Color (16 bit) mode for the best display results (800 x 600 minimum) . For Hyperion, please use a display of 1366x768 resolution or higher.
<b>Mouse</b>	Standard
<b>Keyboard</b>	Standard
<b>Printer</b>	Laser
<b>Scanner</b>	Access to an office scanner capable of scanning paper documents into Adobe PDF format

## 4 Workstations Configuration Procedures

### Browser Configuration

This section provides configuration changes required to use FI\$Cal applications.

#### ***Configuration for PeopleSoft Financials Users***

The configuration for PeopleSoft Financials users is shown in Table 5.


Table 5: Browser Configuration for PeopleSoft Users

Browser	Configuration
Internet Explorer 11	Certified in standard mode with PeopleTools 8.53.11 and higher. Running in compatibility mode is not required.
Internet Explorer 10	Enable Compatibility or Quirks mode, the default configuration. standardmode is not supported. If the Compatibility or Quirks mode is disabled, PeopleSoft applications will run in standard mode, which drastically affects how the Ajax partial page refresh operates and might make the pages unusable.
Internet Explorer 9	Enable standard mode, the default configuration. Compatibility View is not supported.
Firefox 30	Use the default configuration.

**Configuration for Hyperion Planning Users**

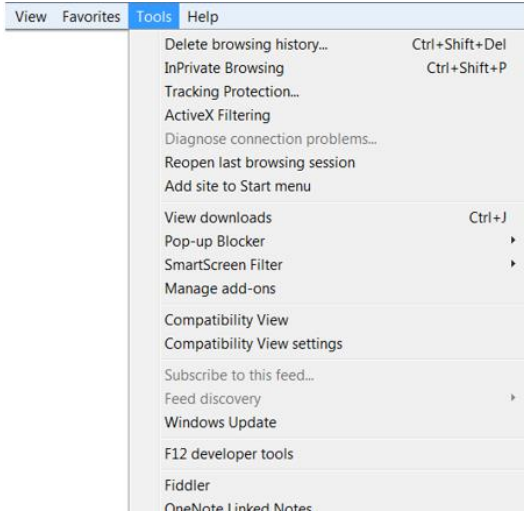
The configuration for Hyperion planning users is shown in Table 6.

Table 6: Browser Configuration for Hyperion Users

Browser	Configuration
Internet Explorer (All versions)	<ol style="list-style-type: none"> <li>1. Current Hyperion users are to disable Enterprise Mode by unchecking the Enterprise Mode option. New users are to skip to Step 4.               <ol style="list-style-type: none"> <li>a. Open IE browser.</li> <li>b. Select Tools from menu bar:</li> </ol>  </li> <li>2. Enterprise Mode will show as checked. Click on Enterprise Mode to disable it.</li> <li>3. Close the browser and clear cache.</li> <li>4. Enable "Check for new version every time user visits page":               <ol style="list-style-type: none"> <li>a. Click Tools &gt; Internet Options &gt; General Tab &gt; Browsing History Section &gt; Settings.</li> <li>b. Check the option "Every time I visit the webpage."</li> <li>c. Click "OK."</li> </ol> </li> <li>5. Enable pop-ups from Hyperion:               <ol style="list-style-type: none"> <li>a. Click Tools &gt; Internet Options &gt; Privacy Tab.</li> <li>b. Click "Settings."</li> <li>c. Enter "*.fiscal.ca.gov" in the "Address of website to allow:" box and click "Add."</li> </ol> </li> </ol>

	<ul style="list-style-type: none"><li>d. Click “Close.”</li><li>e. Uncheck “Turn on Pop-up Blocker.”</li><li>f. Click “Apply.”</li><li>g. Click “OK.”</li></ul> <p>6. Add Workspace URL to trusted sites:</p> <ul style="list-style-type: none"><li>a. Click Tools &gt; Internet Options &gt; Security Tab.</li><li>b. Select “Trusted Sites” &gt; Click “Sites” button.</li><li>c. Under “Add this website to the zone,” enter the Workspace URL (<a href="https://epm.fiscal.ca.gov">https://epm.fiscal.ca.gov</a>).</li><li>d. Click “Add.”</li><li>e. Uncheck "Require server verification (https:) for all sites in this zone"</li><li>f. Click “Close” &gt; Click “OK.”</li></ul> <p>7. Customize Security Settings for Trusted Sites:</p> <ul style="list-style-type: none"><li>a. Click Tools &gt; Internet Options &gt; Security Tab.</li><li>b. Select “Trusted sites.”</li><li>c. Click “Custom level...”</li><li>d. Scroll down to the “Miscellaneous” section.<ul style="list-style-type: none"><li>i. Select “Access data sources across domains” &gt; Enable.</li><li>ii. Select “Allow script-initiated windows without size or position constraints” &gt;Enable.</li></ul></li><li>e. Select “Run ActiveX controls and plug-ins” &gt; Enable.</li><li>f. Select “Script ActiveX controls marked safe for scripting” &gt; Enable.</li><li>g. Click “OK”.</li></ul> <p>8. Minimize security setting for trusted sites:</p> <ul style="list-style-type: none"><li>a. Click Tools &gt; Internet Options &gt; Security Tab.</li><li>b. Select “Trusted Sites” &gt; Select “Custom Level.”</li></ul>
--	---

Browser	Configuration
	<ul style="list-style-type: none"> <li>c. From “Reset To” list, select “Low.” (“Medium” can also be selected, but as an added step, users will be prompted to continue when they use the System).</li> <li>d. Click “Reset.”</li> <li>e. Click “OK”.</li> </ul> <p>9. Allow session cookies for specific sites:</p> <ul style="list-style-type: none"> <li>a. Click Tools &gt; Internet Options &gt; Privacy Tab.</li> <li>b. Click “Sites.”</li> <li>c. Enter “ca.gov” in “Address of website” box.</li> <li>d. Click Allow.</li> <li>e. Click “OK.”</li> <li>f. Click Advanced. Check the "Override automatic cookie handling", accept the first and third-party cookies and check the "Always allow session cookies" option.</li> <li>g. Click “OK.”</li> </ul> <p>10. Allow encrypted pages to be saved to disk:</p> <ul style="list-style-type: none"> <li>a. Click Tools &gt; Internet Options &gt; Advanced Tab.</li> <li>b. Security Section &gt; Uncheck “Do not save Encrypted Pages to Disk.”</li> <li>c. Click “OK.”</li> </ul> <p>11. Enable Native XMLHTTP:</p> <ul style="list-style-type: none"> <li>a. Click Tools &gt; Internet Options &gt; Advanced Tab.</li> <li>b. Select Security Section &gt; Check “Enable Native XMLHTTP Support”.</li> <li>c. Click “OK.”</li> </ul> <p>12. Compatibility View Option</p> <ul style="list-style-type: none"> <li>a. Click Tools &gt; Compatibility View Settings.</li> <li>b. Make sure “EPM Workspace URL” is <b>not</b> in the Compatibility view list. If “Compatibility View” is checked, remove the URL from the compatibility view list.</li> </ul>

Browser	Configuration
	<ul style="list-style-type: none"> <li>c. Uncheck all available options at the bottom of the list.</li> <li>d. Click Close.</li> </ul> <p>13. Set the Zoom setting to 100% to avoid browsing issues when using Internet Explorer 11 for Hyperion application.</p> <ul style="list-style-type: none"> <li>a. Click View &gt; Zoom.</li> <li>b. Set it to 100%.</li> </ul>
<p>Internet Explorer 9</p>	<p>Enable Standards mode, the default configuration. Compatibility View is not supported.</p> <p>To verify Internet Explorer is in standard mode, click on the “Tools” menu and confirm that “Compatibility View” is <b>not</b> checked as shown in the screenshot below:</p>  <p>If “Compatibility View” is checked, remove the URL from the compatibility view list.</p>
<p>FireFox 31 ESR</p>	<ul style="list-style-type: none"> <li>1. Enable Pop-ups <ul style="list-style-type: none"> <li>a. Click Options &gt; Content.</li> <li>b. Click “Exceptions.”</li> <li>c. Enter “fiscal.ca.gov” in the “Address of website.” box.</li> <li>d. Click “Allow.”</li> <li>e. Click “Close.”</li> <li>f. Click “OK.”</li> </ul> </li> </ul>

<p>Registry Modification</p>	<ol style="list-style-type: none"> <li>1. Click Start &gt; Run &gt; Regedt32 &gt; Enter.</li> <li>2. Navigate to the following location: My Computer\HKEY_CURRENT_USER\Software\Microsoft\Windows\CurrentVersion\Internet Settings.</li> <li>3. Right Click on "Internet Settings" &gt; New &gt; DWORD Value 32-bit.</li> <li>4. Name it "ReceiveTimeout."</li> <li>5. Right Click on "ReceiveTimeout" &gt; Select "Modify."</li> <li>6. Check "Decimal" &gt; In "Value Data" section and enter "480000."</li> <li>7. Click "OK."</li> <li>8. Repeat the above process for each of remaining 2 DWORD Values listed below:             <ol style="list-style-type: none"> <li>a. KeepAliveTimeout = 180000</li> <li>b. ServerInfoTimeout = 180000</li> </ol> </li> <li>9. Close Registry &gt; Reboot PC.</li> </ol>
------------------------------	--

**Spreadsheet Uploads**

A subset of PeopleSoft users will have the ability to upload data to FI\$Cal using Excel templates. Macros are required to be enabled. Job aids for each specific upload process will be posted to the FI\$Cal website here: <http://www.fiscal.ca.gov/access-fiscal/FISCalJobAidsandTrainingTips.html>

**Enabling Macros in Excel**

Follow the instructions provided in the links below. Choose the “disable all macros with notification” option so that macros can be enabled on a file by file basis. Once the change is made, the entire Excel application must be restarted for enabled macros to take effect.

Table 7: Macro Security Settings in Excel

Excel Version	Link
Excel 2010 & 2013	<a href="http://office.microsoft.com/en-us/excel-help/change-macro-security-settings-in-excel-HP010342232.aspx">http://office.microsoft.com/en-us/excel-help/change-macro-security-settings-in-excel-HP010342232.aspx</a>

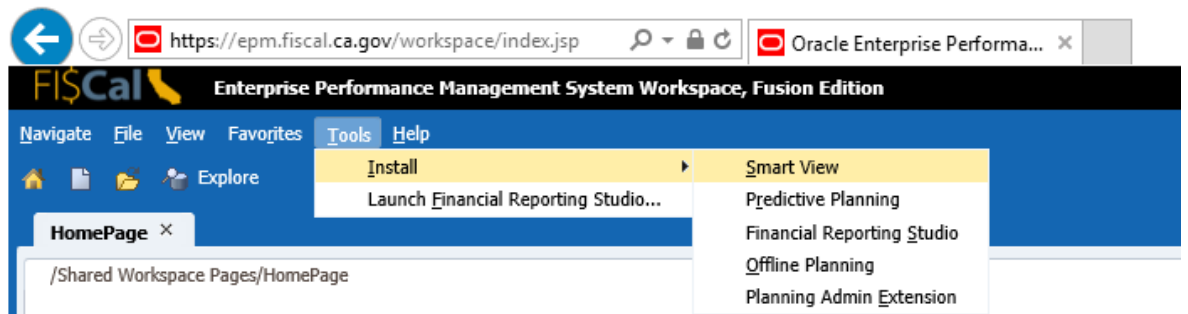
**Client Software Installation**

**Oracle SmartView Installation for Hyperion**

SmartView for Office is a comprehensive tool for accessing and integrating Enterprise Project Management (EPM) and Business Intelligence (BI) content from Microsoft Office products. It provides a common Microsoft Office interface designed specifically for EPM and BI. Using SmartView, users can view, import, manipulate, distribute, and share data in Microsoft Excel, Word and PowerPoint interfaces.

If **not already installed** on the workstation, do the following to install SmartView:

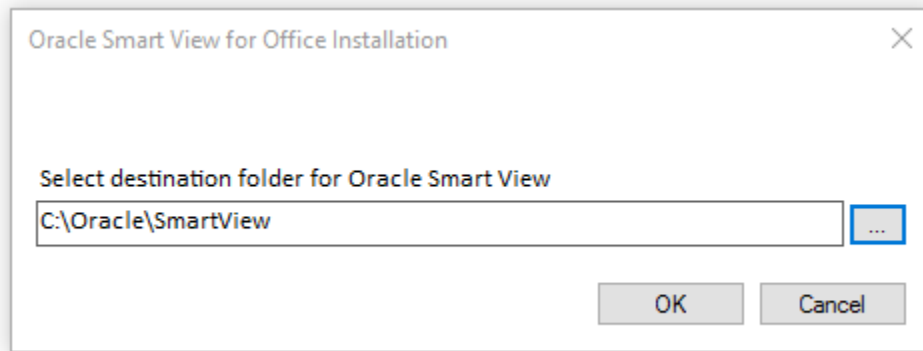
1. Log on to the computer with local administrator privileges.
2. Login to <https://epm.fiscal.ca.gov/workspace/index.jsp>.
3. Go to Tool > Install > SmartView.



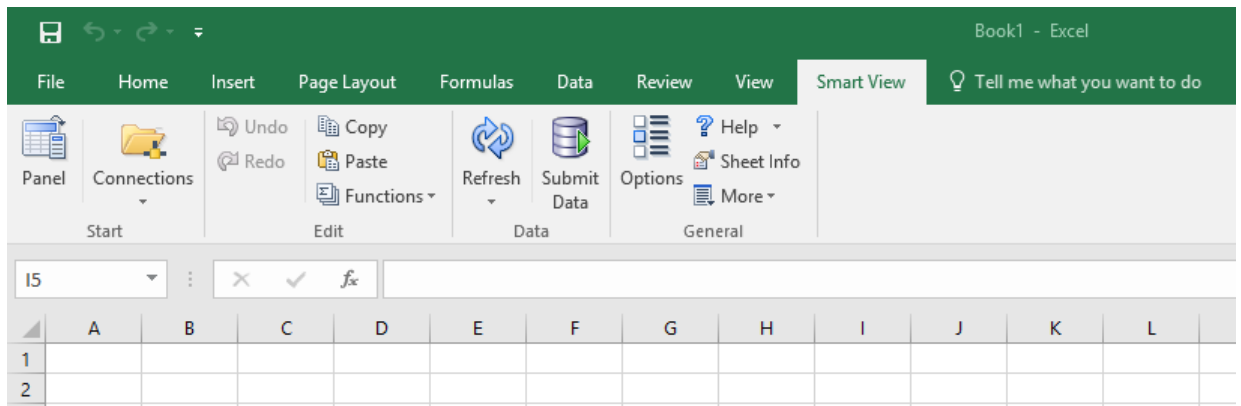
4. Click on “Run” in the pop-up window to install SmartView.



5. Enter C:\Oracle\SmartView as destination folder. Click “OK”.



6. Click "OK" on the pop-up window that says installation is successful.
7. Open MS Excel. A new menu called "SmartView" will appear in the top menu.



8. If you didn't see the SmartView tab, check if SmartView add-ins are active in Excel Options:
  - a. Go to File > Options
  - b. Select "Add-Ins" from left navigation menu.
  - c. Select "Disabled Items" from the manage drop down list on "Add-Ins" page and press "Go" button right next to the drop-down menu.
  - d. A new pop-up dialog appears listing all disabled Add-Ins.
  - e. Select all Add-Ins belonging to Hyperion SmartView (i.e. HsTbar.xla).
  - f. Press the "Enable" button to enable your selection. It should be similar to the screenshot below afterwards.





Add-ins		
Name ^	Location	Type
<b>Active Application Add-ins</b>		
Hstbar	C:\...\Oracle\SmartView\bin\HsTbar.xla	Excel Add-in
Oracle Smart View for Office	C:\...\Oracle\SmartView\bin\HsAddin.dll	COM Add-in

g. Check that SmartView option now appears on the top menu.

9. Click “SmartView”.
10. Click “Options.”
11. In the shared connection URL field, enter the SmartView URL as:  
<https://epm.fiscal.ca.gov/workspace/SmartViewProviders>
12. Click “OK” to save.

**If SmartView was previously installed**, do the following to update the connection URL:

1. Log on to the computer with local administrator privileges to uninstall the older version.
2. Follow previous steps on new installation (“If **not already installed** on the workstation, do the following to install SmartView”).

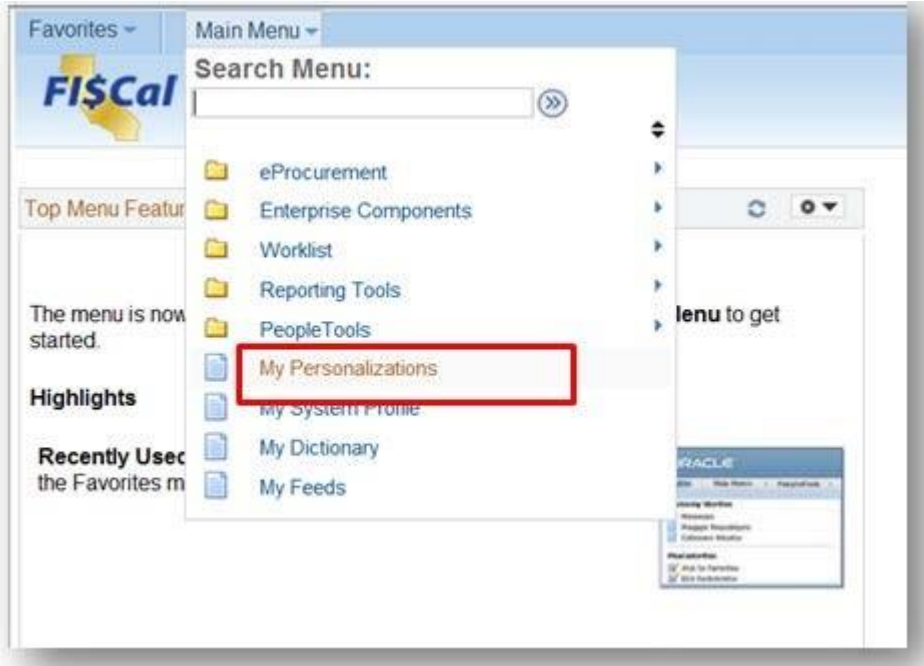
## 5 Accessibility


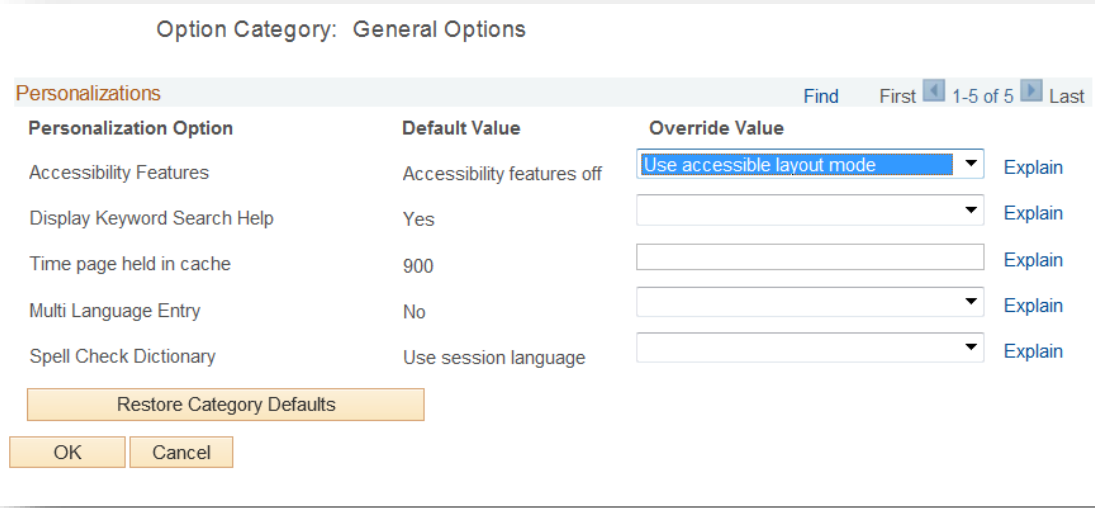
When using FI\$Cal with a screen reader, a user must enable the accessibility mode in their user preferences as described in Table 8 below.

### PeopleSoft Accessibility Mode

Table 8: Enabling the Accessibility Mode in PeopleSoft

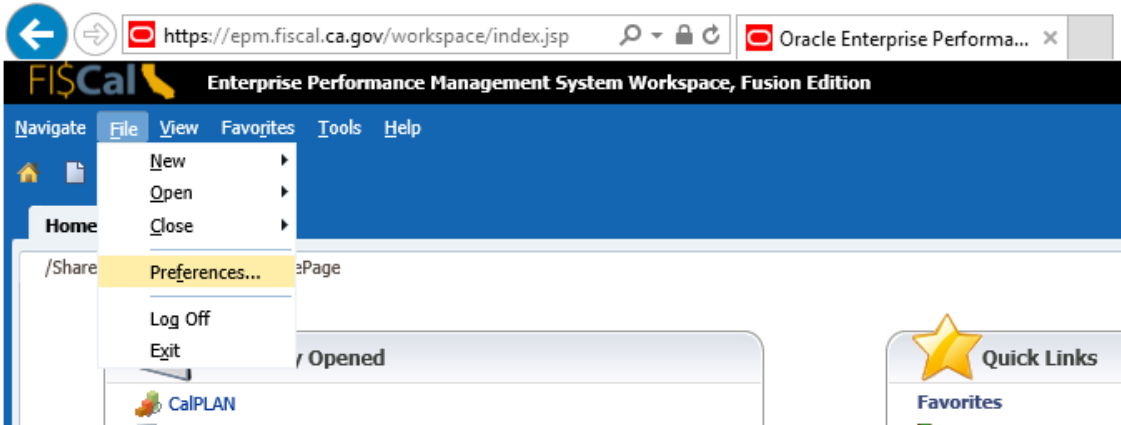
Step	Action
1	Log on to PeopleSoft with the specific user ID that requires the accessibility mode.

2	<p>From the PeopleSoft Home Screen, select Main Menu and “My Personalizations.”</p>  <p>The screenshot shows the PeopleSoft Home Screen interface. At the top left, there is a 'Favorites' dropdown menu. Below it is the 'FI\$Cal' logo. To the right, there is a 'Main Menu' dropdown menu that is open, displaying a 'Search Menu:' field and a list of menu items: eProcurement, Enterprise Components, Worklist, Reporting Tools, PeopleTools, My Personalizations, My System Profile, My Dictionary, and My Feeds. The 'My Personalizations' item is highlighted with a red rectangular box. On the left side of the screen, there are sections for 'Top Menu Features', 'The menu is now started.', 'Highlights', and 'Recently Used the Favorites m...'. On the right side, there is a 'Menu to get' section and a small 'ORACLE' window.</p>
3	<p>Select “Personalize General Options”.</p>

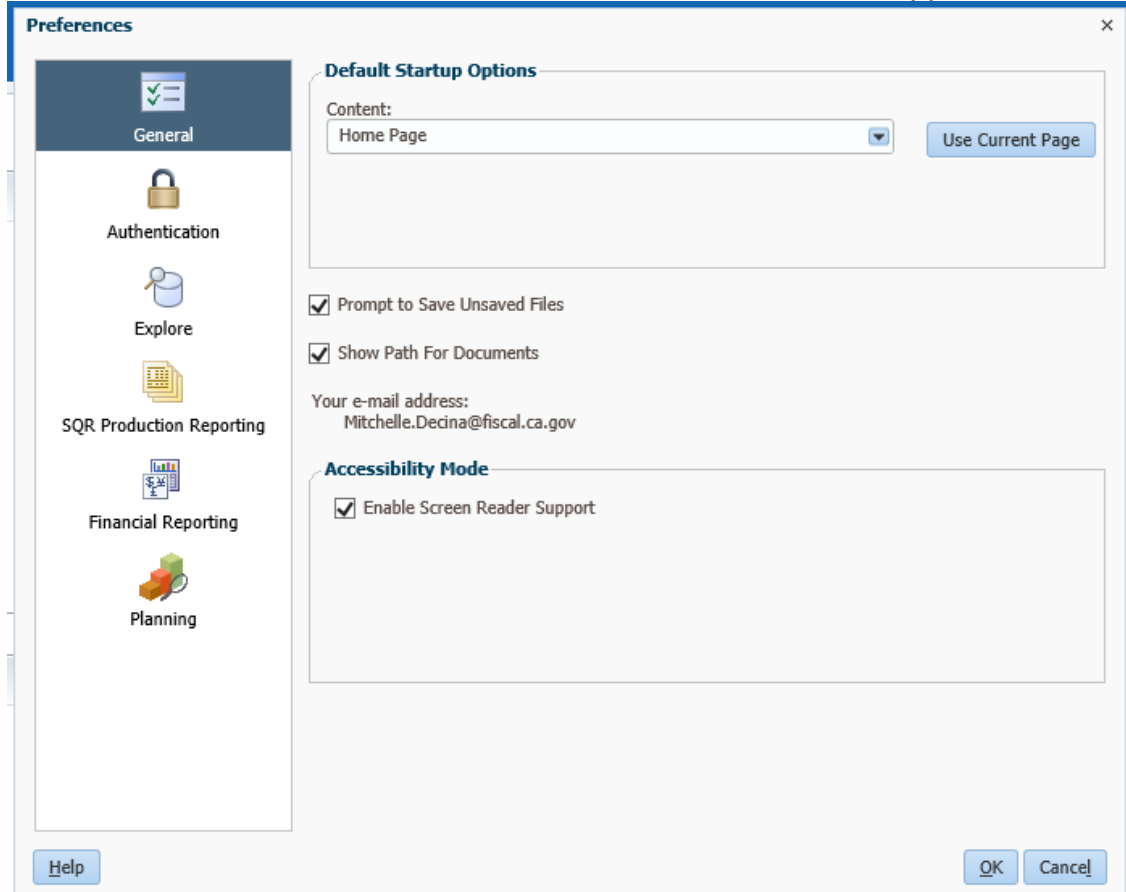
Step	Action																								
	 <p><b>Personalizations</b> Derek Salzman Personalized settings are in effect. You must login again to see the changes.</p> <p><b>Personalize User Option by Category</b></p> <ul style="list-style-type: none"> <li><b>Personalize General Options</b></li> <li>Personalize Regional Settings</li> <li>Personalize System &amp; Personalize User Options</li> <li>Personalize Navigation Personalizations</li> </ul> <p>Restore Defaults</p>																								
4	<p>Select “Use accessible layout mode” under Accessibility Features and click “OK.”</p>  <p>Option Category: General Options</p> <p>Personalizations <span style="float: right;">Find First 1-5 of 5 Last</span></p> <table border="1"> <thead> <tr> <th>Personalization Option</th> <th>Default Value</th> <th>Override Value</th> <th></th> </tr> </thead> <tbody> <tr> <td>Accessibility Features</td> <td>Accessibility features off</td> <td>Use accessible layout mode</td> <td>Explain</td> </tr> <tr> <td>Display Keyword Search Help</td> <td>Yes</td> <td></td> <td>Explain</td> </tr> <tr> <td>Time page held in cache</td> <td>900</td> <td></td> <td>Explain</td> </tr> <tr> <td>Multi Language Entry</td> <td>No</td> <td></td> <td>Explain</td> </tr> <tr> <td>Spell Check Dictionary</td> <td>Use session language</td> <td></td> <td>Explain</td> </tr> </tbody> </table> <p>Restore Category Defaults</p> <p>OK Cancel</p>	Personalization Option	Default Value	Override Value		Accessibility Features	Accessibility features off	Use accessible layout mode	Explain	Display Keyword Search Help	Yes		Explain	Time page held in cache	900		Explain	Multi Language Entry	No		Explain	Spell Check Dictionary	Use session language		Explain
Personalization Option	Default Value	Override Value																							
Accessibility Features	Accessibility features off	Use accessible layout mode	Explain																						
Display Keyword Search Help	Yes		Explain																						
Time page held in cache	900		Explain																						
Multi Language Entry	No		Explain																						
Spell Check Dictionary	Use session language		Explain																						

**Hyperion Accessibility Mode**

Table 9: Enabling the Accessibility Mode in Hyperion

Step	Action
1	To enable Workspace Accessibility, log on to Hyperion as the user that requires Accessibility Mode.
2	Select "File", and "Preferences". 

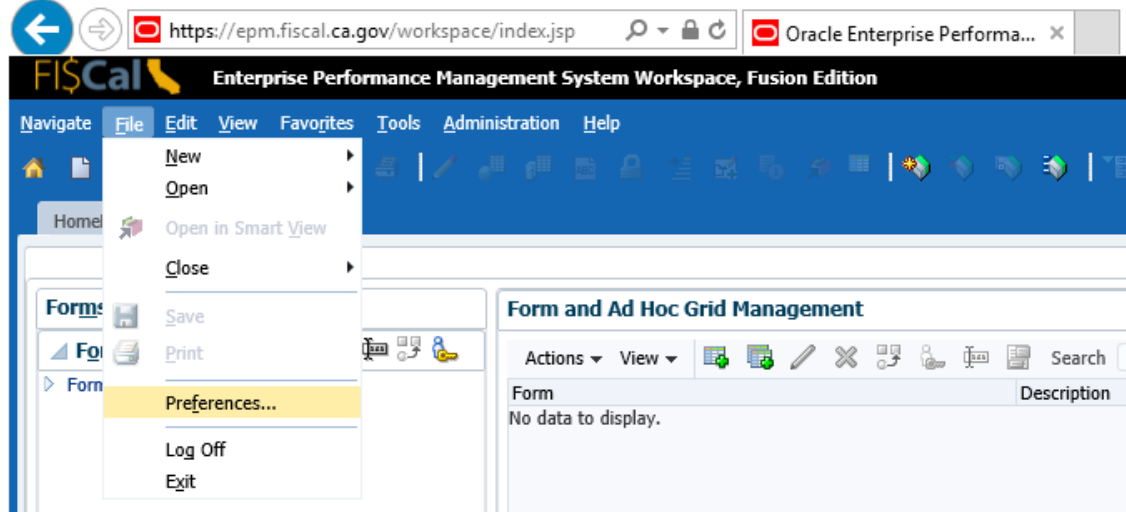
3 Select the “General” tab, and Check “Enable Screen Reader Support.”



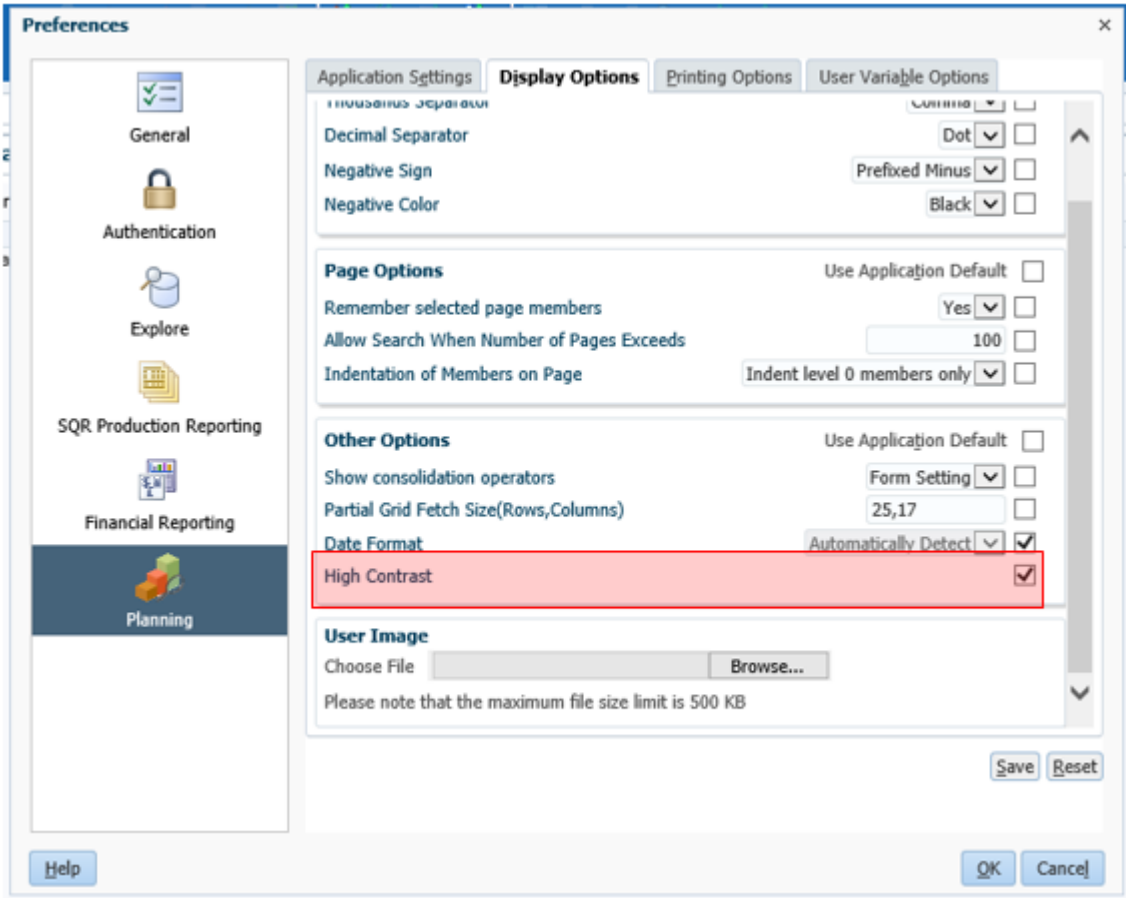
Click “OK.”

Log off and restart the browser for this change to take effect.

To enable High-Contrast Mode in Planning, open the desired Planning application from Workspace. Select File > Preferences.



Select "Planning" from the application list, "Display Options" tab, and "High-Contrast" option.



## 6 Departmental Configuration

### Whitelists for the University of FI\$Cal

UF users are to work with their IT departments to ensure they can:

- 1) receive emails from the UF and
- 2) access the UF

Have your IT department whitelist the following, including the IP Addresses:

- UF Email - Public IP Address: 167.89.25.81
- UF – <https://fiscal.netdimensions.com> (Public IP Address: 18.217.68.153)

Many department use web filtering software that can impact connectivity with the UF. Whitelisting the UF and its IP Address help for a better user experience.

- Appendix A (page 22)
  - FTA     FI\$Cal Training Academy now known as the University of FI\$Cal (UF)
  - UF     The University of FI\$Cal formerly known as FI\$Cal Training Academy (FTA)

## Appendix A. Acronyms and Glossary

The following terms and acronyms are used in this document:

Acronym/Term	Definition
BI	Business Intelligence
CPU	Central Processing Unit
DWORD	Double word. A numerical value of twice the size of a word, typically 32 bits.
EPM	Enterprise Performance Management
EPPM	Enterprise Project Portfolio Management
ESR	Extended Support Release
FTA	FI\$Cal Training Academy
GRC	Governance Risk and Compliance
HKEY	Handle to Registry Key
HTTPS	HyperText Transfer Protocol over SSL
IE	Internet Explorer
IAM	Identity & Access Management
JAWS	Job Access With Speech. A screen reader developed for computer users whose vision loss prevents them from seeing screen content or navigating with a mouse. It provides speech and Braille output for several computer applications.
JRE	Java Runtime Environment
OTech	Office of Technology Services
PCM	Primavera Contract Management
PDF	Portable Document Format
RAM	Random Access Memory
SSL	Secure Socket Layer
UPK	User Productivity Kit
URL	Uniform Resource Locator
Whitelist	A list of approved websites that can be visited by users and where the viewed content is not blocked.
Workflow notification	An email notice to a specific user or users informing them that an action is required within the System, for example, an approval.
XML	Extensible Markup Language
XUL	Extensible Markup User Interface Language