

State of California



End-User Workstation Configuration Guide

Version 9.1

June 2025

End-User Workstation Configuration Guide

Revision History

Date	Revision	Last Updated By	Change
2/4/2014	1.0	Derek Salzman	Document Creation.
4/14/2014	2.0	Tommy Trang	Update for Wave 1.
4/24/2014	3.0	Derek Salzman	Expanded scope to include full workstation configuration.
4/28/2014	3.2	Derek Salzman	Updated based on team review comments.
7/3/2014	3.3	Derek Salzman	Added new section 8 with content on Excel upload processes.
7/22/2014	3.4	Derek Salzman	Updated to include the new SmartView link for Hyperion reporting and revised GRC browser compatibility.
7/23/2014	3.5	Y Reyes	Updated to include steps if SmartView is already installed.
7/30/2014	3.6	M Haynes	Updated to make settings website specific where possible.
12/9/14	3.7	Derek Salzman	Hyperion and PeopleSoft support for IE11.
1/14/15	3.8	Charlie Benson	Updated for Primavera P6 and Contract Management.
4/2/15	4.0	Peter Han, Eunice Malley, Richard Walker	Consolidated the Production version and the non-Production version. Added the instructions to enable Enterprise Mode on IE 11. Later removed Added PeopleSoft Browser Configuration for IE11. Modify the order of the sections for logical grouping. Added the instructions to enable accessibility mode in PeopleSoft and Hyperion. Removed the Windows 8 requirements as it requires further compatibility testing. Added compatibility for MS Word and Excel 2013. Replaced the instructions on enabling macros in Excel with the official articles from Microsoft. Technical writer review (4/17) Added indentations for subsections. Updated Table of Contents for Sections 4 and 5 (4/23).
5/18/15	4.1	Richard Walker	Revised Step 7 in Section 4.1.2 - Configuration for Hyperion Planning Users
5/28/15	4.2	Peter Han	Revised URLs for SmartView. Changed "Smart View" to "SmartView". Updated the Wave 1 reference to Wave1 and Wave 2 in 3.2.2. Applications covered.

Date	Revision	Last Updated By	Change
6/4/15	4.3	Derek Salzman	Clarified section on accessibility software. Updated Hyperion Internet Explorer configuration by removing instruction to disable HTTPS requirement for trusted sites.
7/20/15	4.4	Ed Remaley	Clarified internet browser certification for Internet Explorer 11.
8/19/15	4.5	Ed Remaley	Additional documentation of Enterprise Mode. Later removed.
12/9/15	4.6	Bryan Sohayda	DRAFT updates for Release 2016 Removed detail for GRC and Primavera, will generate separate Appendix documents for SCO/DGS respectively. Reduces confusion for incoming Depts. if they need to use GRC/Primavera respectively. Removed application versions as it doesn't impact the requirement. Revised list of Certified Browsers per Oracle. Revised Office versions to remove version 2007. Table 5 – Remove Internet Explorer 8 reference. 4.1.2 Hyperion Planning: removed reference to Enterprise Mode and Internet Explorer 8. Modified Firefox details.
1/13/16	4.6.1	Bryan Sohayda	Updates for 2016 Release
1/14/16	4.6.1	Eunice Malley	Added heading for Section 6, Departmental Configuration, and Section 6.1 regarding FTA whitelists
1/15/16	4.7	Eunice Malley	Tech edit of changes made since last publication
2/2/16 2/11/16 2/20/16	5.0	Valerie Stanfield Eunice Malley	Clean up edits. Modified whitelist wording.
7/6/16	5.1	Rabah Khemis Eunice Malley	SmartView and Hyperion updates
7/22/16	5.2	Eunice Malley	Browser and settings updates.

Date	Revision	Last Updated By	Change
8/1/16	5.3	Peter Lee Eunice Malley	Browser Configuration changes - Internet Explorer (All versions). Changes to Oracle SmartView Installation for Hyperion.
11/9/17	6.0	Mitchelle Decina	Updated the Operating Systems section to specify Windows 10 as an Oracle-certified OS. Added Microsoft 2016 in the Productivity Software section. Updated the screenshots for Hyperion, as the previous screenshots don't have the latest FI\$Cal logo. Added screenshots on SmartView installation section. Added instructions on how to enable SmartView add-ins. Added instructions on how to set IE browser view setting to 100% to avoid browsing issues when using IE 11 for Hyperion. Removed the instructions on how to enable BI Publisher Accessibility Mode in Workspace. This is no longer applicable because OBIEE 12c is currently not integrated with EPM Workspace 11.1.2.4.
8/28/19	7.0	Anthony Ampania	Added Service Now URL to Networking Connectivity section. Updated Title page by removing – For July 2018 Release and the word draft, changed from December 2017 to August 2019, changed Version 6.0 to Version 7.0.
8/28/19	8.0	Nathaniel Jenkins	ADA Remediation for entire document Changed Version 7.0 to 8.0.
4/21/2025	8.1	Alan Anderson	Updated URLs
6/5/2025	9.1	Alan Anderson	Updated URLs and fixed typos

Table of Contents

End-User Workstation Configuration Guide.....	2
Purpose.....	6
Network Connectivity.....	6
Hardware and Software Requirements	7
Operating Systems	7
Browser Compatibility.....	7
What is “Certification” for Browser Compatibility?.....	7
Applications Covered	7
Certified Browsers.....	7
Productivity Software.....	8
Accessibility Software.....	9
Hardware.....	9
Workstations Configuration Procedures.....	10
Browser Configuration	10
Configuration for PeopleSoft Financials Users.....	10
Configuration for Hyperion Planning Users	10
Browser Configuration for Hyperion Users.....	10
Chrome	10
Edge	10
FireFox	10
Registry Modification	10
Spreadsheet Uploads	11
Enabling Macros in Excel.....	11
Macro Security Settings in Excel	11
Client Software Installation.....	11
Oracle SmartView Installation for Hyperion	11
Accessibility	15
PeopleSoft Accessibility Mode	15
Enabling the Accessibility Mode in PeopleSoft	15
Hyperion Accessibility Mode.....	16
Enabling the Accessibility Mode in Hyperion.....	16
Appendix A. Acronyms and Glossary	19

Purpose

This document provides workstation specifications and configurations required for departmental end-user access to the current production FI\$Cal System (FI\$Cal or the System). These requirements are categorized as follows: network connectivity, operating systems, browser compatibility, browser configuration, client software installation, productivity software, accessibility software, and hardware.

A glossary and list of acronyms contained in this document is included in [Appendix A](#) for reference.

Network Connectivity

Table 1 provides the list of FI\$Cal application URLs that must be accessible to the user's workstation. These applications use the HTTPS protocol on standard port 443 and are Internet-enabled. For a list of applications and the current URLs, please refer to "Access FI\$Cal" page of the fiscal.ca.gov site.

Table 1: FI\$Cal Application URLs

Application	URL
FI\$Cal Portal	FISCal Portal URL
PeopleSoft Financials	PeopleSoft Financials URL
Hyperion Planning	Hyperion Planning URL
FI\$Cal Service Now	FI\$Cal ServiceNow URL
Identity Self Service	FI\$Cal ISS URL
Open FI\$Cal	Open FI\$Cal URL
Cal eProcure	Cal eProcure URL
FI\$Cal Business Intelligence	FI\$Cal Business Intelligence Reports URL
FI\$Cal Learning Center	FI\$Cal Learning Center URL

Hardware and Software Requirements

Operating Systems

FI\$Cal supports Windows 10 operating systems for end-user workstations. Oracle certified Windows 10 for use with FI\$Cal applications.

FI\$Cal provides full support on Windows 10 as of May 24, 2017.

Browser Compatibility

What is “Certification” for Browser Compatibility?

Certification is a combination of Oracle software, browsers, or sometimes other third-party products, and operating systems that Oracle has tested and should work together.

Applications Covered

This document contains the current browser certification for the FI\$Cal System.

- PeopleSoft Financials
- PeopleSoft Portal
- Hyperion Planning
- Identity and Access Management (password changes)
- FI\$Cal Learning Center (FLC)

Certified Browsers

Certified browsers are for workstation (personal computer) and laptop only. FI\$Cal was not designed to support mobile devices such as iPhone, Android, iPad, tablet, etc.

Table 2 contains the list of Oracle-certified browsers for the FI\$Cal Production System and indicates which browsers support which products associated with FI\$Cal. Newer or older browser versions might perform acceptably for most System functions, but are a “use-at-your-own-risk” proposition. This is because Oracle will not support any related issues and the FI\$Cal Service Center does not have control over this aspect of the Commercial-Off-The-Shelf software.

Table 2: Certified Browsers

Product	Edge (Chromium) 79.x	Edge (Chromium) 80+	Chrome 79.x	Chrome 80+	FF 78.9 ESR	FF 87.x	Edge (legacy) 42.18362
PeopleSoft	X	X	X	X	X	X	X
Hyperion Planning		X		X	X	X	
Identity Access Mgmt (IAM)	X	X	X	X	X	X	X

Productivity Software

The System uses common applications to support reporting, attachment, and notification functionality:

- Reporting – Report formats use one or more common desktop productivity applications including Microsoft Word, Microsoft Excel, and Adobe Portable Document Format (PDF).
- Attachments – Where applicable, attachment functionality allow users to upload and download reference documents in common formats such as Word, Excel, and PDF.
- Notifications – System-generated workflow notifications will be sent by email to appropriate users based on their assigned FI\$Cal end-user role(s).

Table 3: Productivity Software

Application	Use
Microsoft Word (2010, 2013, 2016)	Viewing reports or attachments formatted in Microsoft Word.
Microsoft Excel (2010, 2013, 2016)	Viewing reports or attachments formatted in Microsoft Excel.
Adobe Reader (9.5 or higher)	Viewing reports or attachments formatted in Adobe PDF.
Notepad (or comparable text editor)	Viewing reports or attachments formatted in plain text (e.g. comma-delimited, flat files).

Email Client (State of California account required - does not need to be provided by OTech)	Communicating. For example, used in workflow processing.
---	--

Accessibility Software

Oracle does not certify its products to run with specific assistive technologies or specific versions of assistive software. Oracle uses development standards to produce applications that will interoperate with assistive technologies. The Project follows these standards for custom-developed system components. The Project uses market-leading assistive technologies to perform accessibility testing.

Hardware

Minimum hardware requirements vary by the selection of compatible operating system, browser, and applications as specified by the products' vendors. The Project recommends the hardware specifications shown in Table 4 for end-user workstations.

Table 4: Recommended Hardware

Feature	Description
Random Access Memory (RAM)	4 GB RAM minimum
Central Processing Unit (CPU)	1.7+ GHz CPU minimum, multicore CPU recommended
Monitor	Display of 1024x768 resolution or higher and High Color (16 bit) mode for the best display results (800 x 600 minimum) For Hyperion, please use a display of 1366x768 resolution or higher.
Mouse	Standard
Keyboard	Standard
Printer	Laser
Scanner	Access to an office scanner capable of scanning paper documents into Adobe PDF format

Workstations Configuration Procedures

Browser Configuration

This section provides configuration changes required to use FI\$Cal applications.

Configuration for PeopleSoft Financials Users

None.

Configuration for Hyperion Planning Users

The configuration for Hyperion planning users is shown below.

Browser Configuration for Hyperion Users

Chrome

Step 1: Enable Pop-ups exception for Hyperion application using instructions provided by Chrome.

Edge

Step 1: Enable Pop-ups exception for Hyperion application using instructions provided by Edge.

Firefox

Step 1: Enable Pop-ups exception for Hyperion application using instructions provided by Firefox.

Registry Modification

- Click Start > Run > Regedt32 > Enter.
- Navigate to the following location: My Computer\HKEY_CURRENT_USER\Software\Microsoft\Windows\CurrentVersion\Internet Settings.
- Right Click on "Internet Settings" > New > DWORD Value 32-bit.
- Name it "ReceiveTimeout."
- Right Click on "ReceiveTimeout" > Select "Modify."
- Check "Decimal" > In "Value Data" section and enter "480000."
- Click "OK."

- Repeat the above process for each of remaining 2 DWORD Values listed below:
- KeepAliveTimeout = 180000 - ServerInfoTimeout = 180000
- Close Registry > Reboot PC.

Spreadsheet Uploads

A subset of PeopleSoft users will have the ability to upload data to FI\$Cal using Excel templates. Macros are required to be enabled. Job aids for each specific upload process will be posted to Service Now here: [Knowledge Search - Customer Support](#)

Enabling Macros in Excel

Follow the instructions provided in the links below. Choose the “disable all macros with notification” option so that macros can be enabled on a file by file basis. Once the change is made, the entire Excel application must be restarted for enabled macros to take effect.

Macro Security Settings in Excel

Excel 2010 & 2013 - [Change macro security settings in Excel - Microsoft Support](#)

Client Software Installation

Oracle SmartView Installation for Hyperion

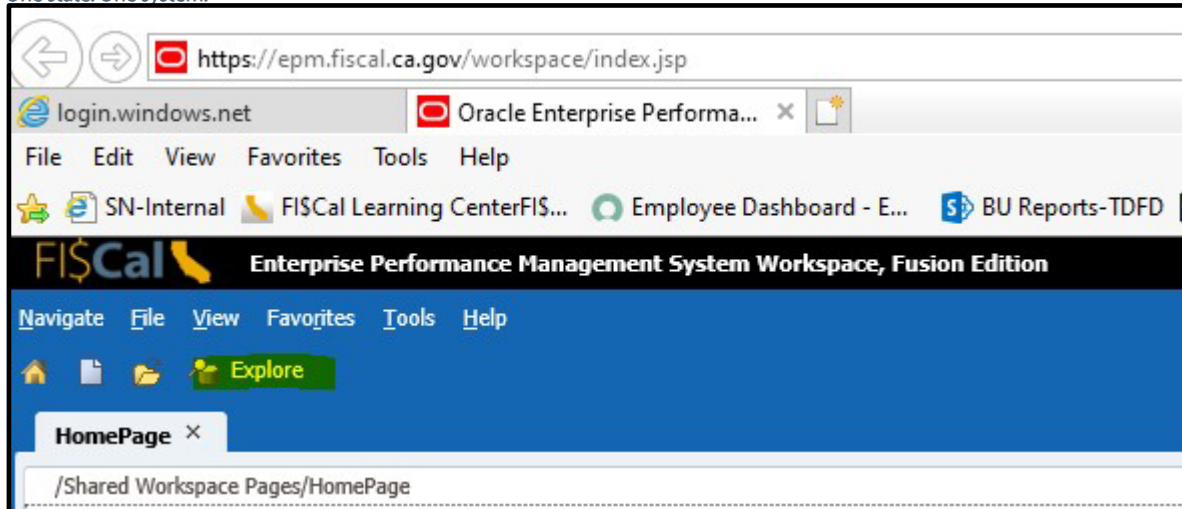
SmartView for Office is a comprehensive tool for accessing and integrating Enterprise Project Management (EPM) and Business Intelligence (BI) content from Microsoft Office products. It provides a common Microsoft Office interface designed specifically for EPM and BI. Using SmartView, users can view, import, manipulate, distribute, and share data in Microsoft Excel, Word and PowerPoint interfaces. FI\$Cal recommends that users install SmartView only through EPM Workspace (steps below). Downloading SmartView directly from Oracle’s website is not supported by FI\$Cal.

If **not already installed** on the workstation, do the following to install SmartView:

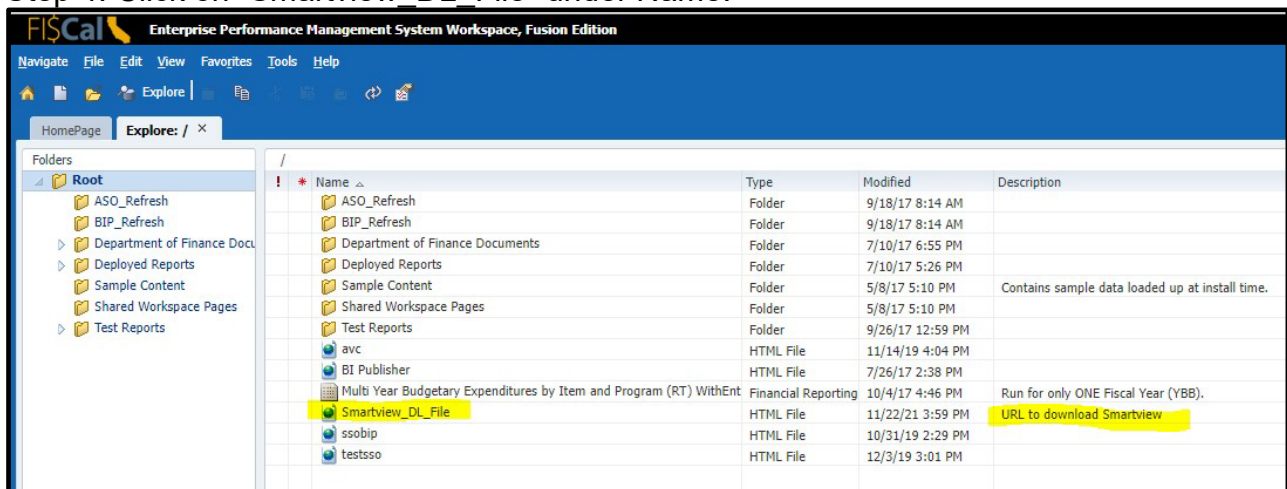
Step 1. Log on to the computer with local administrator privileges.

Step 2. Login to [FISCal Enterprise Project Management and Business Intelligence URL](#).

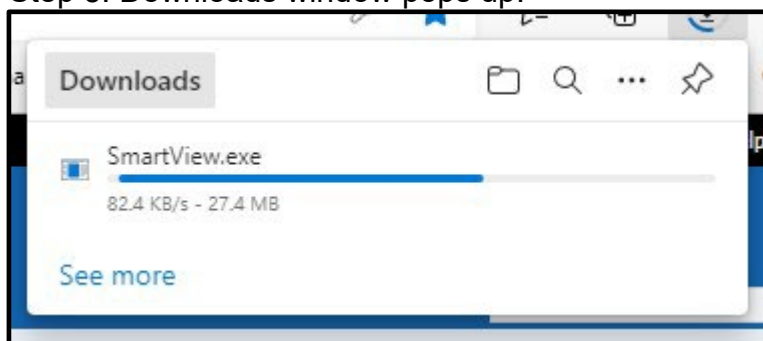
Step 3. Click on Explore.



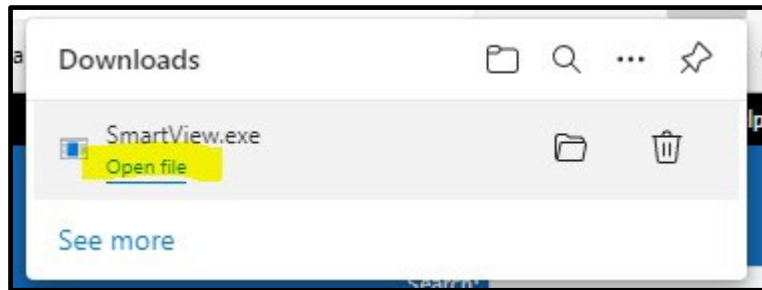
Step 4. Click on “Smartview_DL_File” under Name.



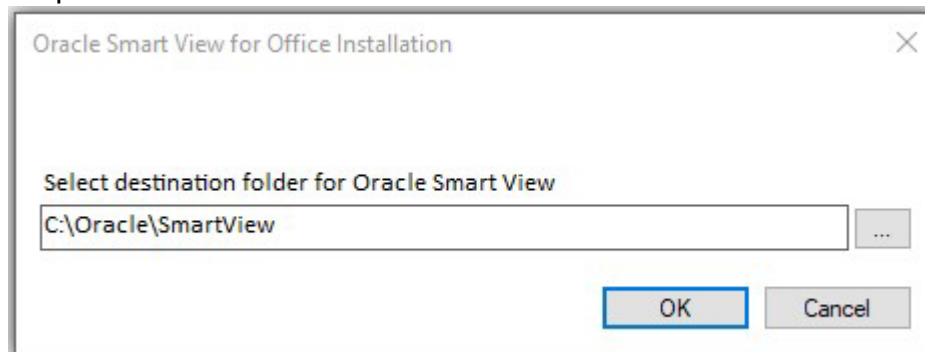
Step 5. Downloads window pops up.



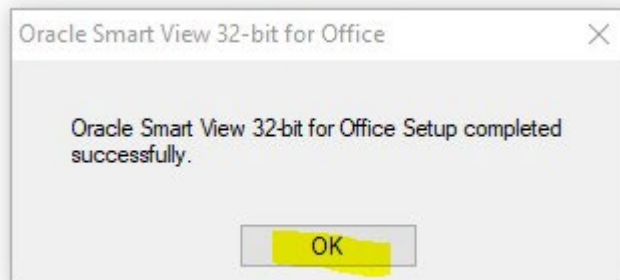
Step 6. Click “Open File



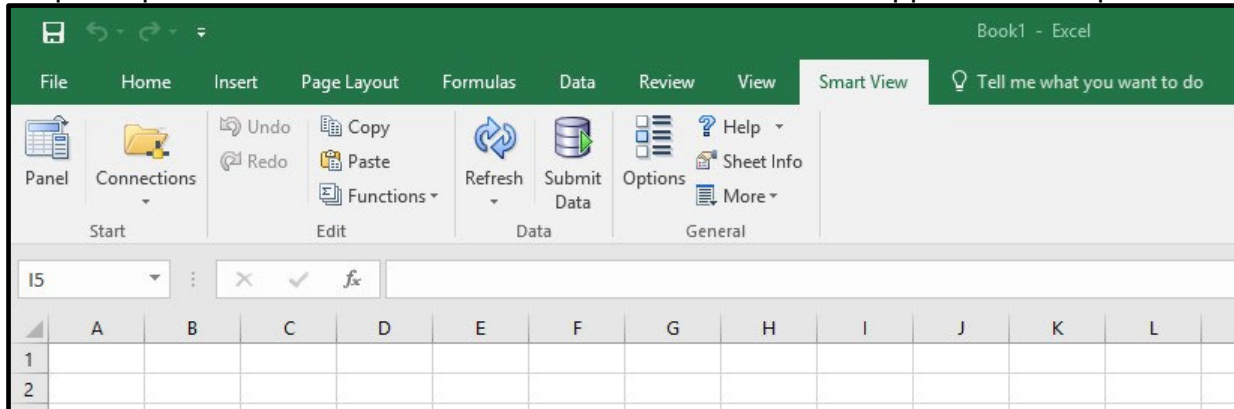
Step 7. Enter C:\Oracle\SmartView as destination folder. Click “OK”.



Step 8. Click “OK” on the pop-up window that says installation is successful.

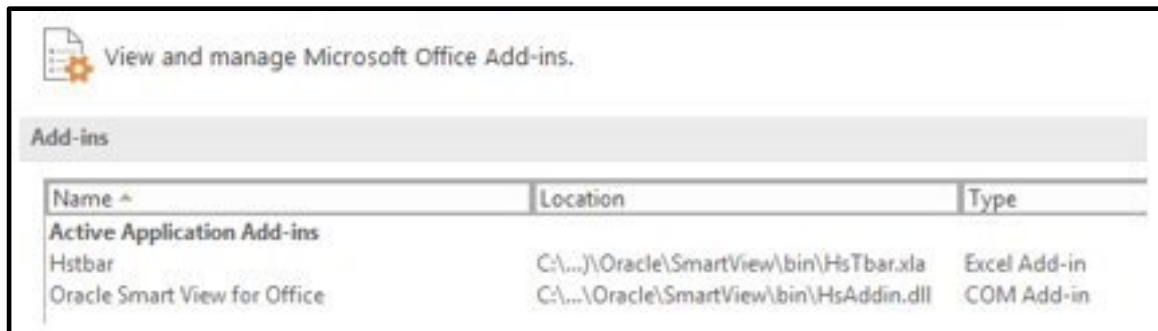


Step 9. Open MS Excel. A new menu called “SmartView” will appear in the top menu.



Step 10. If you didn't see the SmartView tab, check if SmartView add-ins are active in Excel Options:

- Go to File > Options
- Select "Add-Ins" from left navigation menu.
- Select "Disabled Items" from the manage drop down list on "AddIns" page and press "Go" button right next to the drop-down menu.
- A new pop-up dialog appears listing all disabled Add-Ins.
- Select all Add-Ins belonging to Hyperion SmartView (i.e. HsTbar.xla).
- Press the "Enable" button to enable your selection. It should be similar to the screenshot below afterwards.
- Check that SmartView option now appears on the top menu.



- Click “SmartView”.
- Click “Options.”
- In the shared connection URL field, enter the SmartView URL as:
<https://epm.fiscal.ca.gov/workspace/SmartViewProvider>
- Click “OK” to save.

If **SmartView** was previously installed, do the following to update the connection URL:

- Log on to the computer with local administrator privileges to uninstall the older version.
- Follow previous steps on new installation.

Accessibility

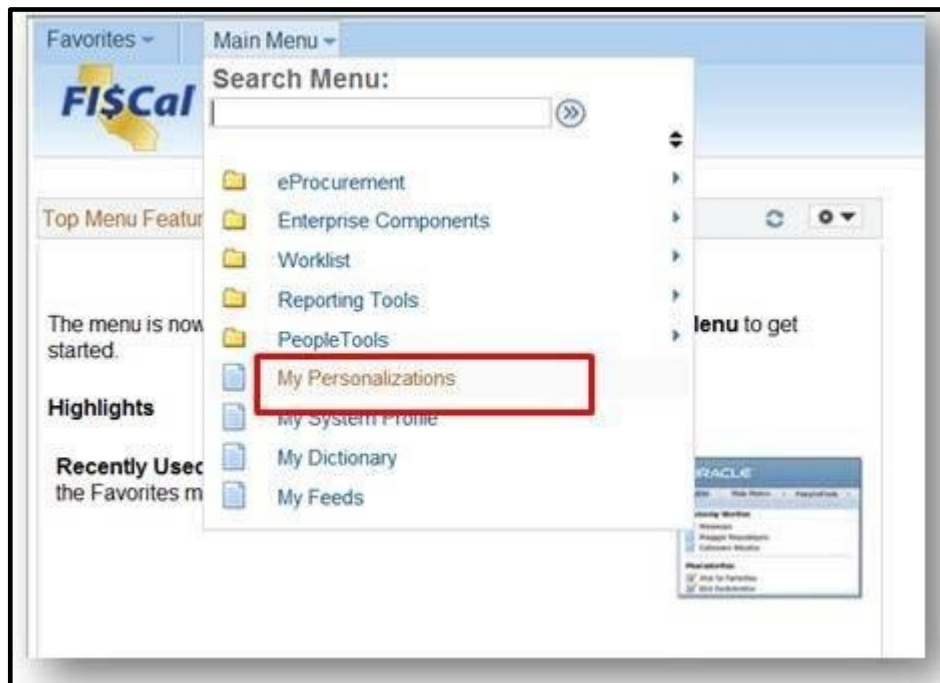
When using FI\$Cal with a screen reader, a user must enable the accessibility mode in their user preferences as described in Table 8 below.

PeopleSoft Accessibility Mode

Enabling the Accessibility Mode in PeopleSoft

Step 1. Log on to PeopleSoft with the specific user ID that requires the accessibility mode.

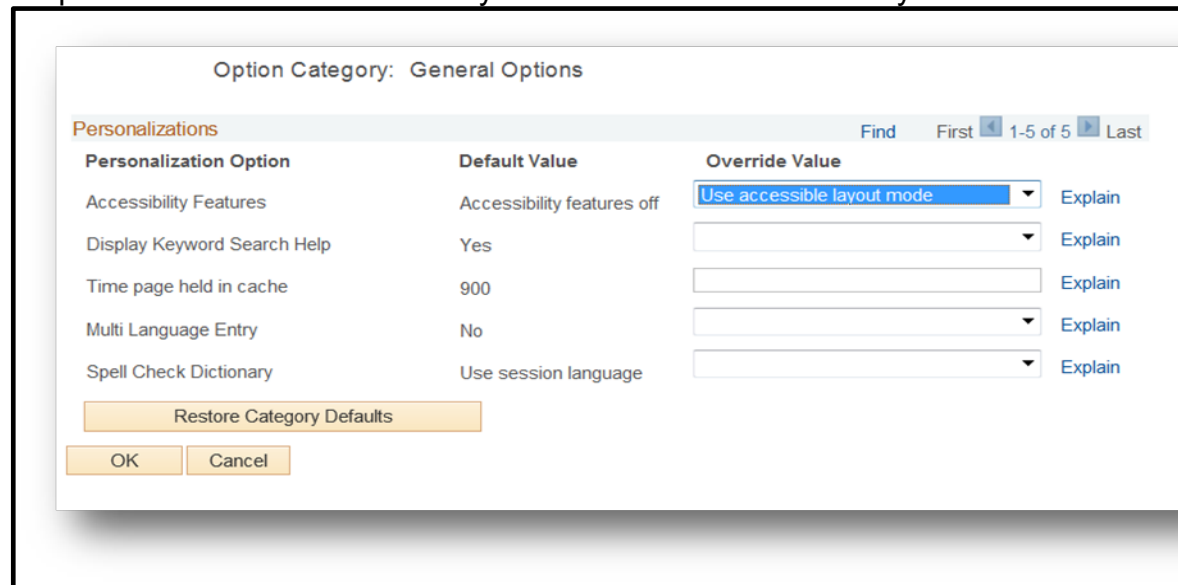
Step 2. From the PeopleSoft Home Screen, select Main Menu and “My Personalizations.”



Step 3. Select “Personalize General Options”.



Step 4. Select “Use accessible layout mode” under Accessibility Features and click “OK.”

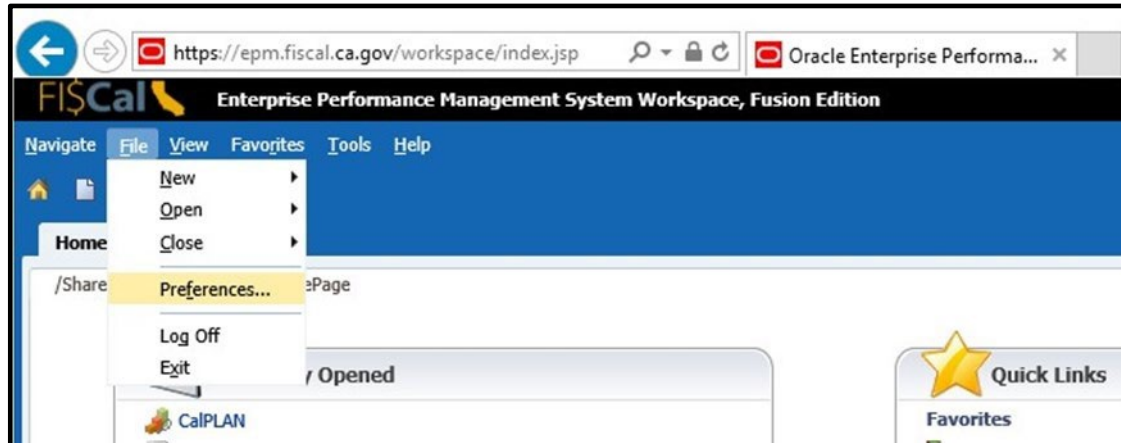


Hyperion Accessibility Mode

Enabling the Accessibility Mode in Hyperion

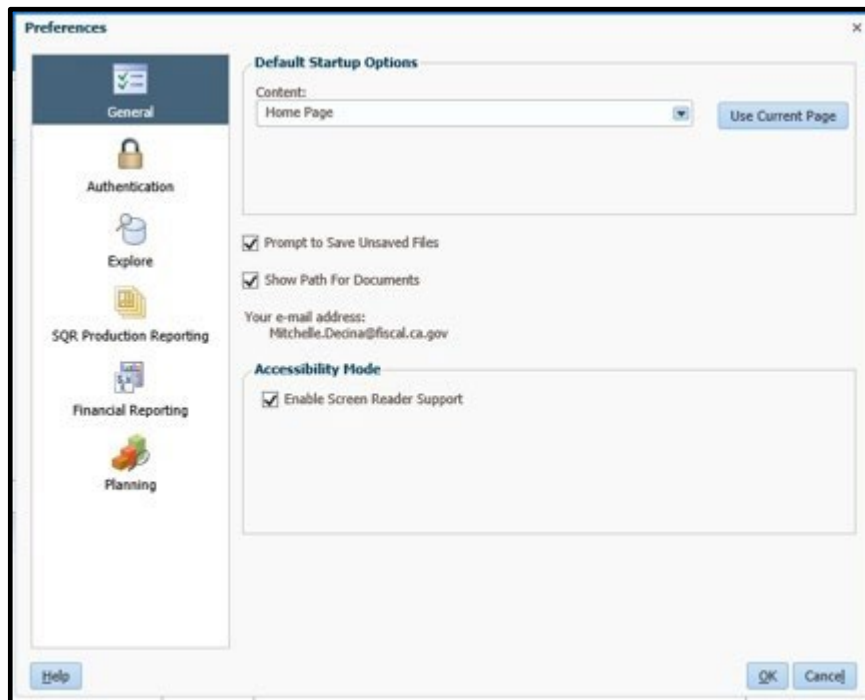
Step 1. To enable Workspace Accessibility, log on to Hyperion as the user that requires Accessibility Mode.

Step 2. Select “File”, and “Preferences”.

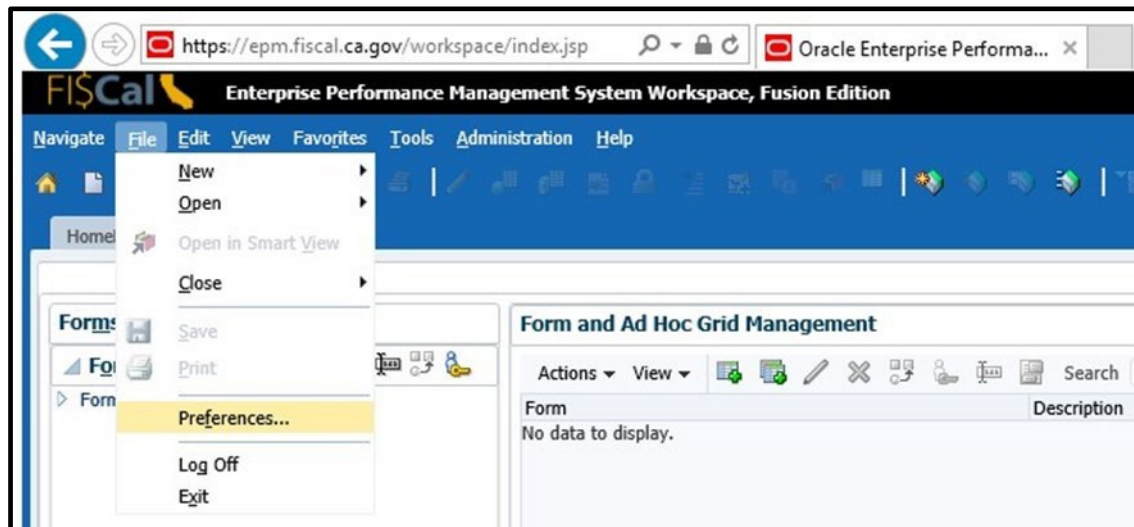


Step 3. Select the “General” tab, and Check “Enable Screen Reader Support.” Click “OK”.

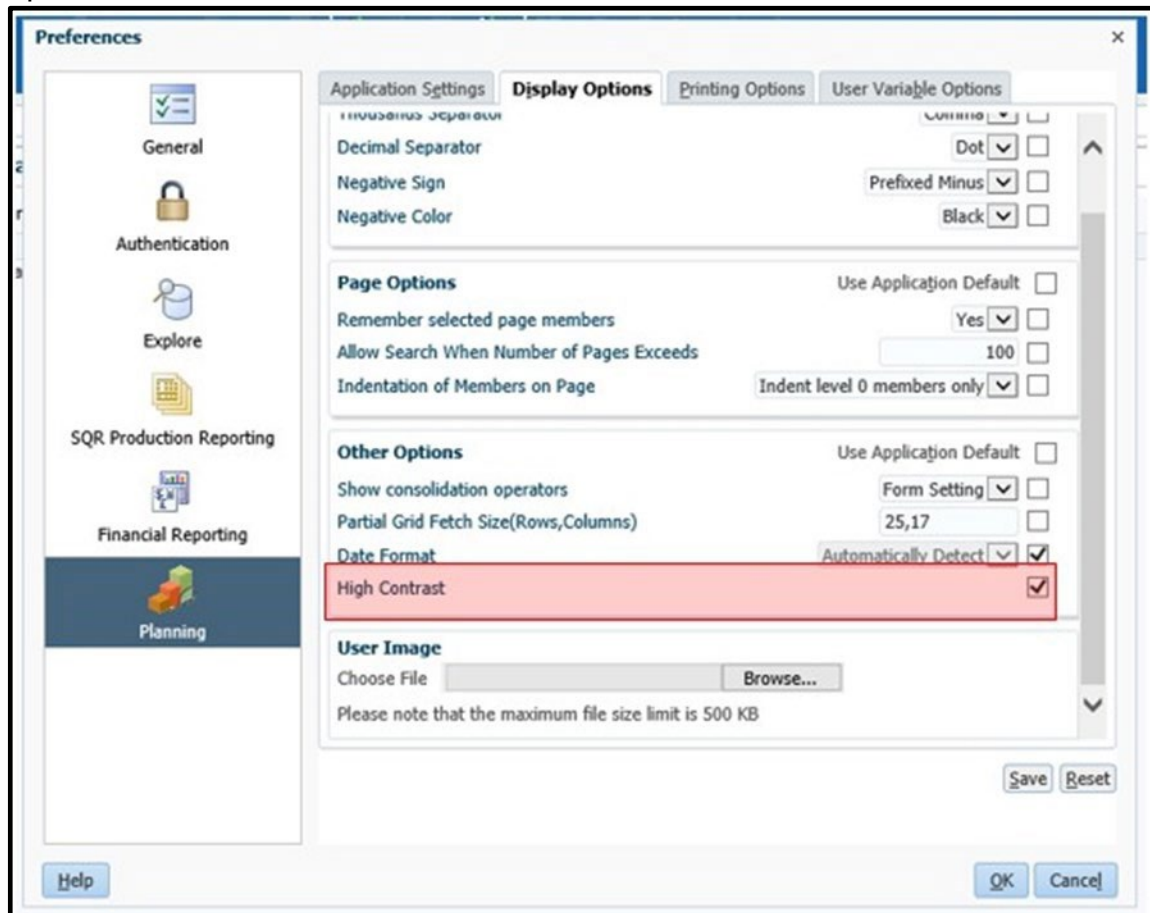
Log off and restart the browser for this change to take effect.



To enable High-Contrast Mode in Planning, open the desired Planning application from Workspace. Select File > Preferences.



Select "Planning" from the application list, "Display Options" tab, and "High-Contrast" option.



Appendix A. Acronyms and Glossary

The following terms and acronyms are used in this document:

Acronym/Term	Definition
BI	Business Intelligence
CPU	Central Processing Unit
DWORD	Double word. A numerical value of twice the size of a word, typically 32 bits.
EPM	Enterprise Performance Management
EPPM	Enterprise Project Portfolio Management
ESR	Extended Support Release
FTA	FI\$Cal Training Academy
GRC	Governance Risk and Compliance
HKEY	Handle to Registry Key
HTTPS	HyperText Transfer Protocol over SSL
IAM	Identity & Access Management
JAWS	Job Access With Speech. A screen reader developed for computer users whose vision loss prevents them from seeing screen content or navigating with a mouse. It provides speech and Braille output for several computer
JRE	Java Runtime Environment
OTech	Office of Technology Services
PCM	Primavera Contract Management
PDF	Portable Document Format
RAM	Random Access Memory
SSL	Secure Socket Layer
UPK	User Productivity Kit
URL	Uniform Resource Locator
Whitelist	A list of approved websites that can be visited by users and where the viewed content is not blocked.
Workflow notification	An email notice to a specific user or users informing them that an action is required within the System, for example, an approval.
XML	Extensible Markup Language
XUL	Extensible Markup User Interface Language